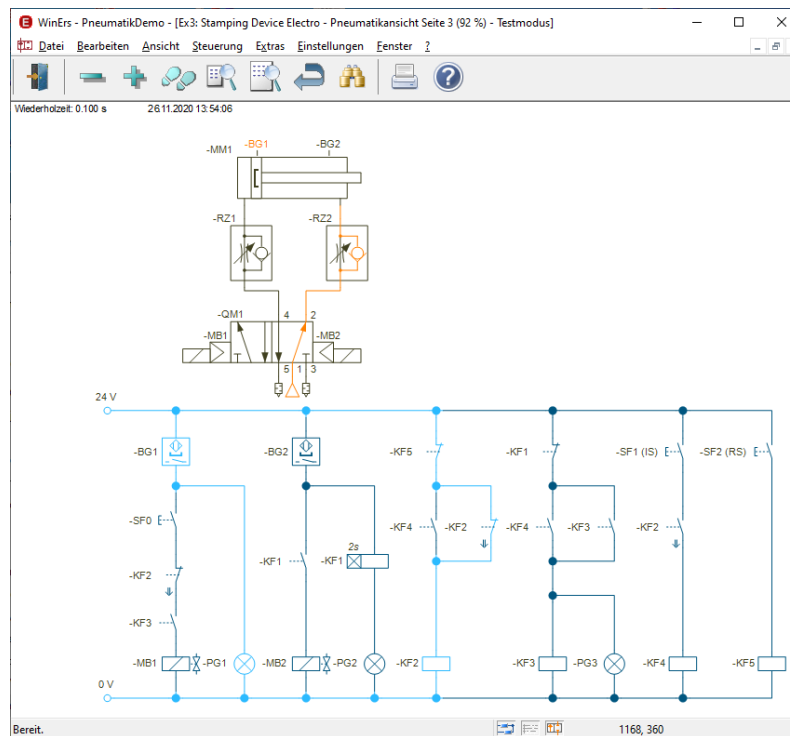


# USING THE CRYPTO-BOX DONGLE IN A NETWORK

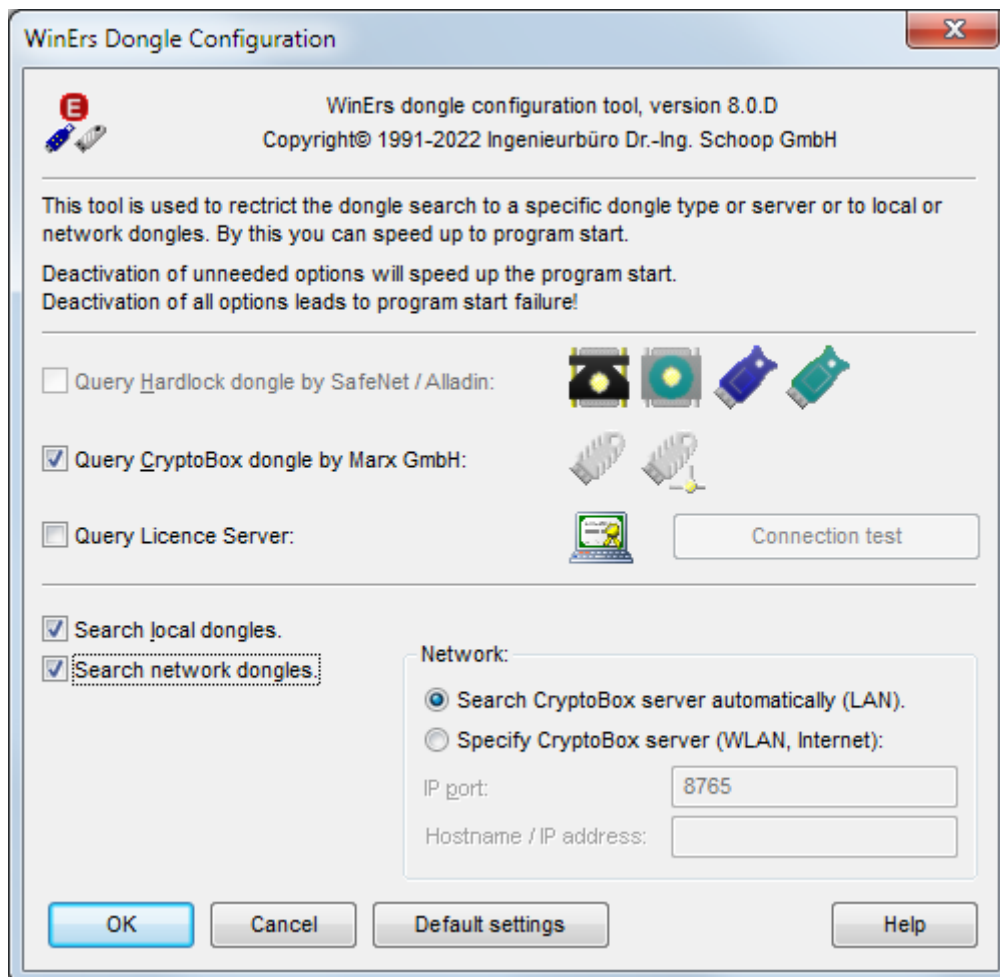


This document describes the setup of network dongles for use with WinErs.

In order for the Crypto-Box Dongle to be used in a network, the Crypto-Box Dongle Server CBIOS Network Server from Marx must be installed on a computer in the network. The (network) dongle is then plugged into this computer.

Network dongles can contain one or more licenses, so that as many WinErs instances can be started in the network as there are licenses available. If necessary, the number of licenses can be increased.

In order for the dongle to be recognized in a network, the search for the network dongle must be enabled with the DongleSetup-exe program.



## INSTALLATION

- Download the (free) software CBIOS Network Server from [www.marx.com](http://www.marx.com).
- Install the software.
- If required, you can change some parameters, e.g. the port used. The default port is 8765.
- The CBIOS Network Server should start automatically with windows

## RUNTIME

- Use the **WinErs dongle configuration utility** to enable searching for Crypto-Box dongles over network.
- Start WinErs. The dongle should be recognized if the local computer and the dongle server are in the same subnetwork.

Please note that you may have to open the port used (default value 8765) when using a firewall.